

shocknews

Oh, no! Anna's SCARY- SKINNY!

A frightening new photo sparks fears for **Anna Faris**

All eyes should have been on the star of the movie, **Chris Pratt**. But when the actor and his wife, Anna Faris, hit the red carpet for the LA premiere of *Jurassic World* on June 9, she was the one drawing stares. "Every bone in her back was visible," says a witness. "You saw her spine!"

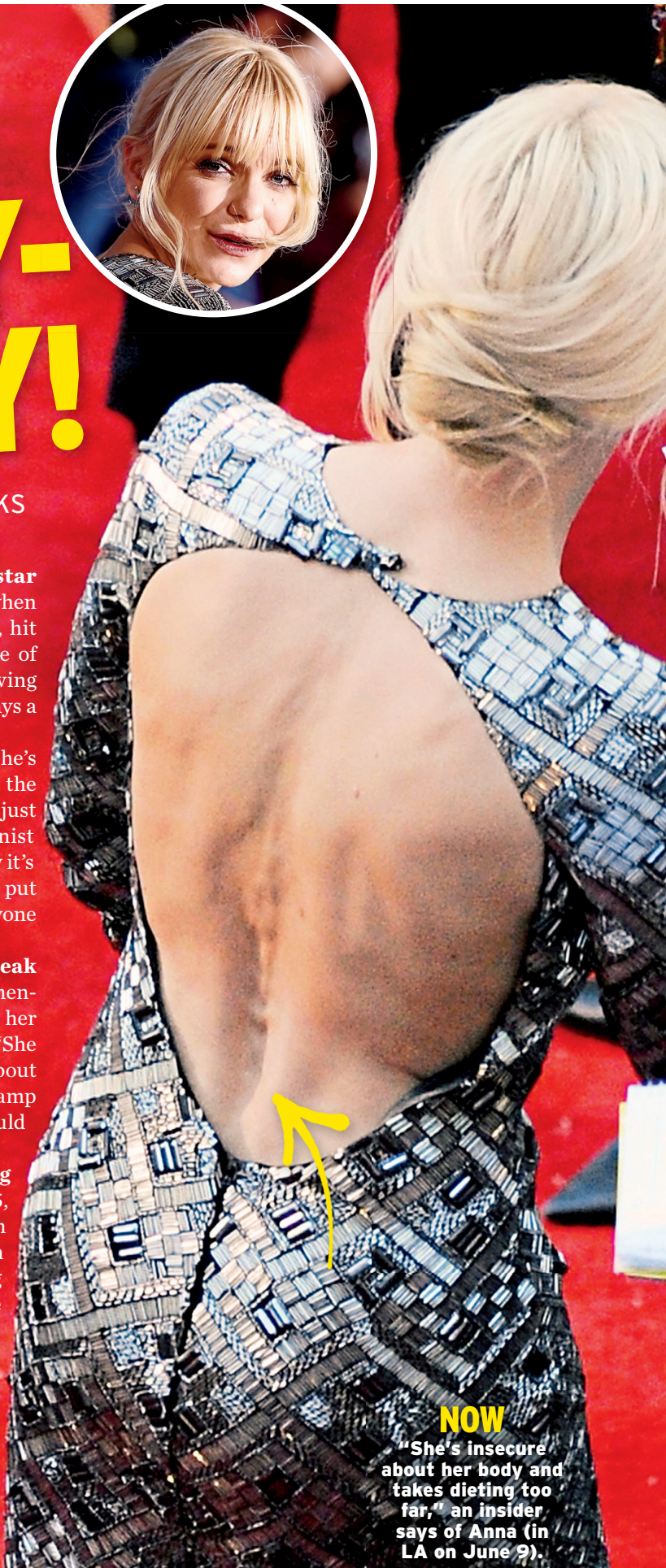
The reason behind her frail frame? "She's obsessed with her weight," an insider says of the 5-foot-4 *Mom* star, 38, who appears to weigh just 108 pounds, according to LA-based nutritionist Lisa DeFazio. "She's always been thin, but now it's extreme. A wardrobe person recently tried to put her in size 0 pants, but they were too big! Everyone was shocked."

But Anna's colleagues aren't likely to speak up. "Her people make it clear that you cannot mention anything to her about her weight," says the insider. "She already worries so much about how she looks, and her camp thinks that comments could make it worse."

One person not keeping his mouth shut? Chris, 35, who dropped 60 pounds in 2013 but looks better than ever. "He's always trying to get her to eat," says the insider. "She says she's just trying to be healthy, but he can see she avoids pretty much everything. Bringing up her eating habits definitely causes friction between them, but Chris doesn't care. He's worried." ■



BEFORE
"She's 130 pounds here," estimates nutritionist Lisa DeFazio of Anna in 2008.



NOW

"She's insecure about her body and takes dieting too far," an insider says of Anna (in LA on June 9).

CLOCKWISE FROM BOTTOM: GETTY; SPLASH (2)